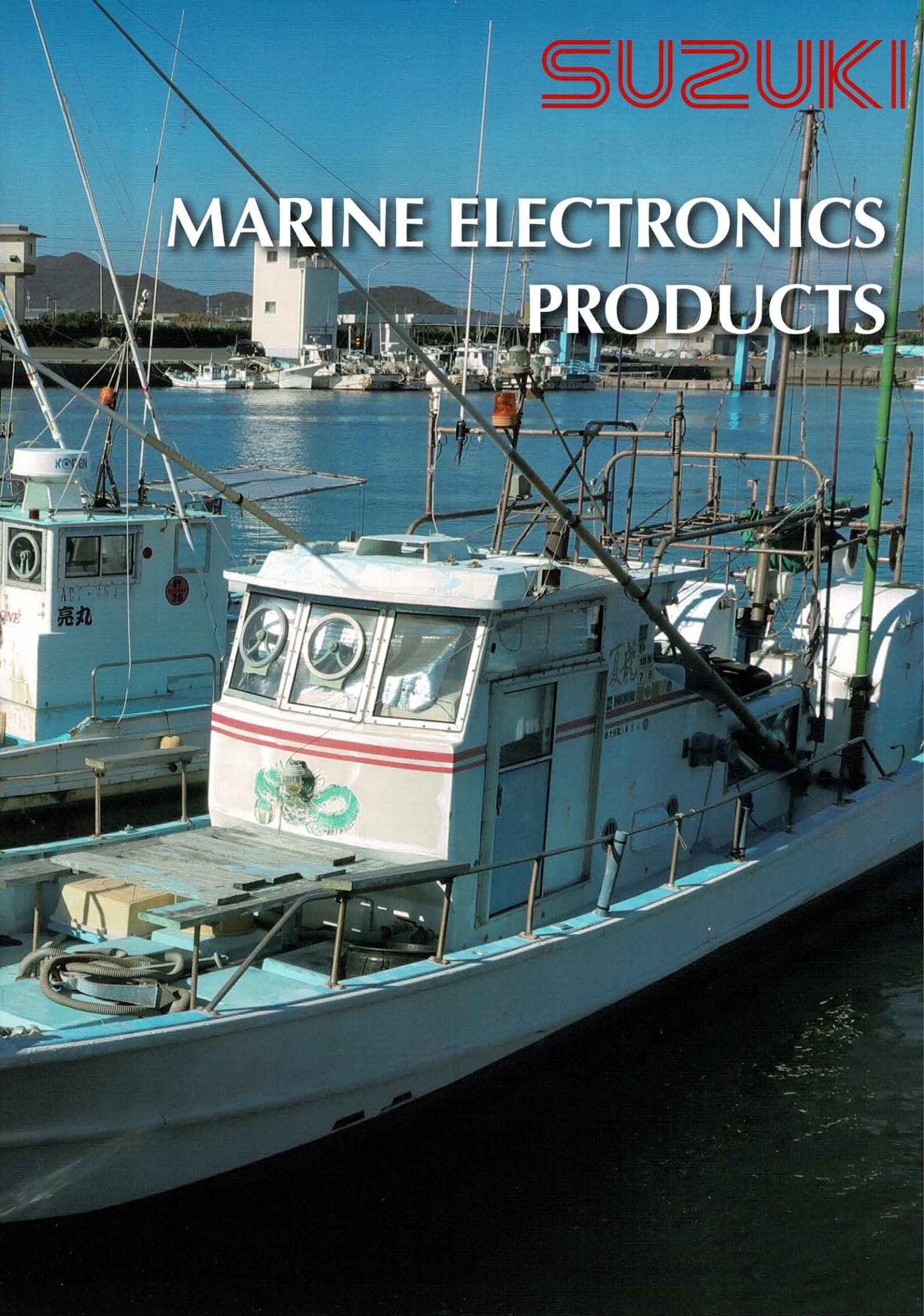


SUZUKI

# MARINE ELECTRONICS PRODUCTS

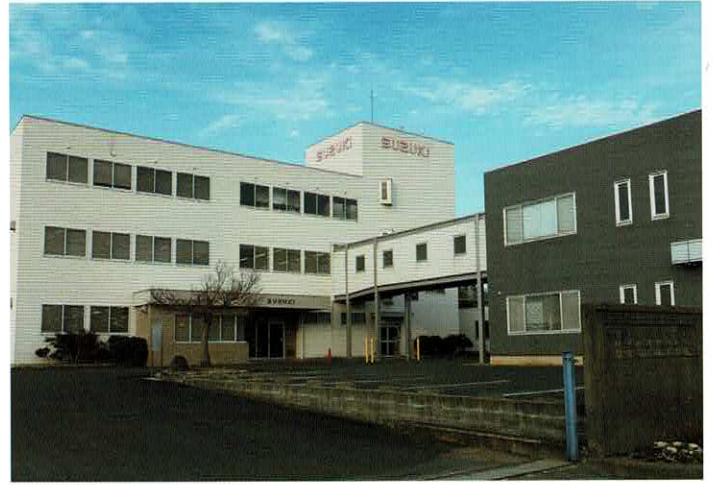


# Company Overview

**Established**  
June 1955

**President**  
Fumihisa Kaneko

**Chief Products**  
Echo sounder, sonar, chartplotter



Head Office Building

## Corporate Profile

SUZUKI FISH FINDER CO., LTD. is one of the leading manufacturers of Marine Electronics. Our products serve marine and OEM and we aim to enrich the lives of customers, suppliers, distributors, and employees by providing the best products that offer excellent quality, safety and operational features at affordable prices.

In 1955 Mr. Kohei Suzuki established Suzuki Fish Finder Company and started to manufacture echo sounders, sonars and later chartplotters.

Today, Suzuki has a diverse product line and distributors in most part of the world. We have built and sold millions of echo sounders, sonars and chartplotters. While our current success has resulted from developing innovative products for a variety of markets, our long term success is based on our commitment to support our customers after the sales. We are winning over our new customers with quality products, tremendous value, and superior service, and we are working to turn them into Suzuki supporters for many years to come.

# INDEX

Product Line up	04
Sonar	06
Plotter / Plotter Sounder	08
Echo Sounder	10
Dimensions and Weight	12
Specifications	16



# Product Line up



## Sonar

Model	S-1400 10.4 inch	S-1900M12 12.1 inch
Specifications		
Display resolution	VGA	
Frequency	220kHz	
Range	0 to 300m	
Sector angle	5 to 360° (Sonar mode) 3 to 177° (Bottom scan mode)	
Tilt angle	+5° to -90°	
Display Mode	Sonar mode, Off-center mode, Bottom scan mode	
Output power	800W	

## Plotter

Model	ESG-625 6.5 inch	ESG-129 10.4 inch
Specifications		
Display resolution	VGA	VGA
Wake point	16000	16000
Mark point	30000	30000
Waypoint	15000	15000
Route	50	50
Output power(Sounder)	-	-

## Echo Sounder

Model	ES-675 6.5 inch	ES-2035 II 10.4 inch
Specifications		
Frequency presentation	2	1 or 2
Output frequency	50 / 200kHz	50 / 200kHz
Display resolution	VGA	VGA
Output power	300W	600W / 1kW

S-1900M15 15 inch



S-1900 MBB



XGA

80, 140, 180kHz

8 ranges 0 to 10 to 2000m

5 to 360 (Sonar mode)  
3 to 177° (Bottom scan mode)

+5° to -90°

Sonar mode, Off-center mode, Bottom scan mode,  
Sounder mode, Full-screen sonar mode

80kHz : 1.5kw / 2.2kW    140kHz : 800W    180kHz : 1.5kW

**Plotter Sounder**

ES-635

6.5 inch



ES-1029

10.4 inch



VGA

16000

30000

15000

50

300W

VGA

16000

30000

15000

50

600W

ES-1080 10.4 inch



ES-7200 12.1 inch



ES-8600 15 inch



1

20, 24, 28, 40, 45, 50, 60, 68, 70, 80, 150, 200kHz

VGA

5kW

1 or 2

20, 24, 28, 40, 45, 50, 60, 68, 70, 80, 150, 200kHz

XGA

5kW

1 or 2 or 3

20, 24, 28, 40, 45, 50, 60, 68, 70, 80, 150, 200kHz

XGA

5kW

# Sonar

S-1400

S-1900

12.1inch, 15inch, BB

RANGE	40
BEARING	0
SECTOR	360
TILT	-45
MARKER	
	→ 0.0
	↘ 0.0
	↓ 0.0
CURSOR	
	+ 0.0
	→ 0.0
	↘ 0.0
	↓ 0.0
POWER	24.5
WATER	12.3

## What is the difference between the sonar and the echo sounder?

The echo sounder always detects beneath the ship with the transducer installed at bottom of the ship.

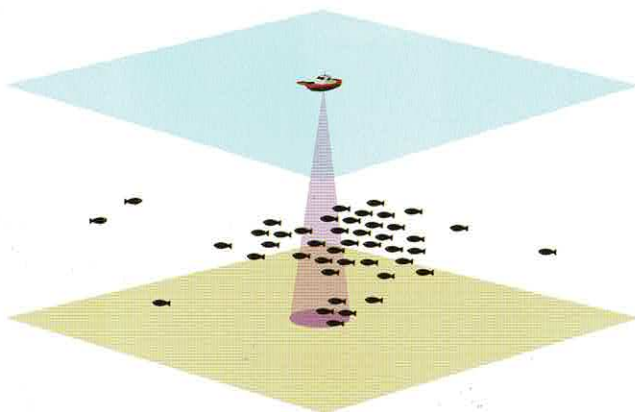
The sonar is a multi-directional echo sounder with a revolving and tilting transducer emitting and receiving ultrasonic waves in various directions.

The sonar can search 360-degree direction area automatically and the tilt angle can be adjusted from +5 to -90 degrees too.

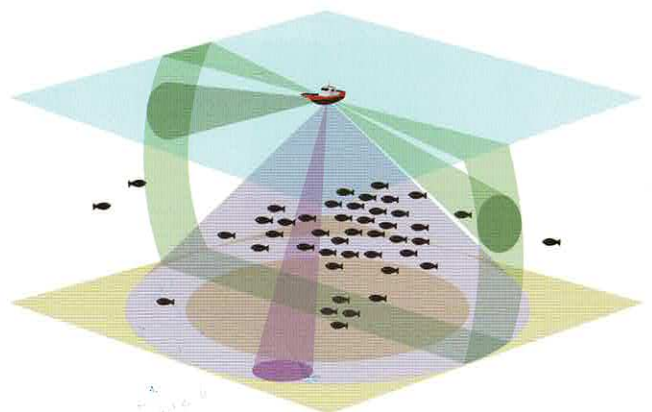
A remarkable feature of the sonar is that the transducer can go down toward the sea bottom automatically and operator can control the transducer.

The operator can adjust the direction and tilt angle for detection as flexibly.

Echo Sounder



Sonar



# Searchlight Sonar 10.4inch

## 4 inch soundome

- ▶ Display unit built-in Transceiver unit.
- ▶ High definition 10.4 inch color LCD display.
- ▶ Newly designed to fit small fishing boats.
- ▶ Compact Hull unit for space saving installation.
- ▶ Affordable Searchlight sonar.



Display unit

**S-1400**



Hull unit

# Searchlight Sonar 12.1inch - 15inch - BB type

- ▶ Free combination of Hull unit and the Display unit.
- ▶ DSP Technology. (High Resolution by digital control)
- ▶ Space Saving Installation.
- ▶ Black Box Sonar connect to any XGA type display. (Owner supplied)
- ▶ Easy Operation.



Junction box



**S-1900M15**  
15 inch



**S-1900M12**  
12.1 inch



**S-1900MBB**



S-1900H800  
(2.2kW)

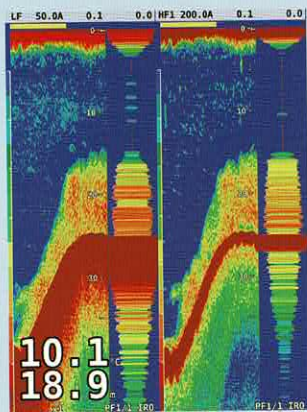
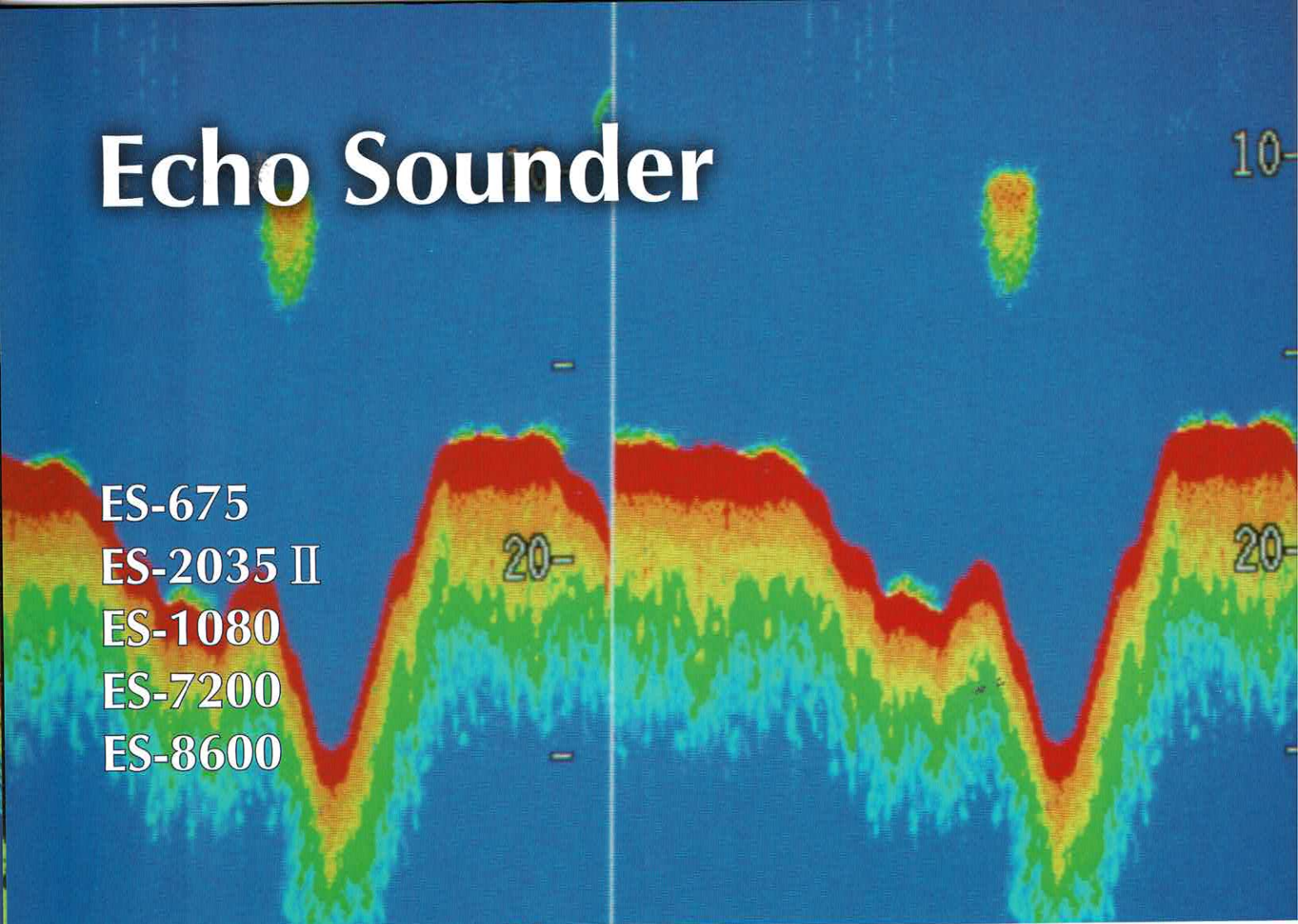


Hull unit

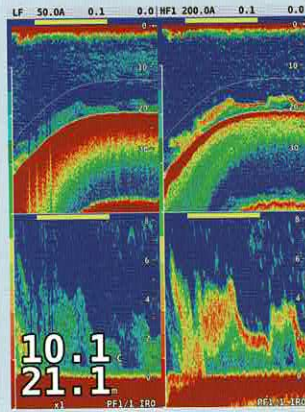
S-1900H80 (1.5kW)  
S-1900H140 (800W)  
S-1900H180 (1.5kW)

# Echo Sounder

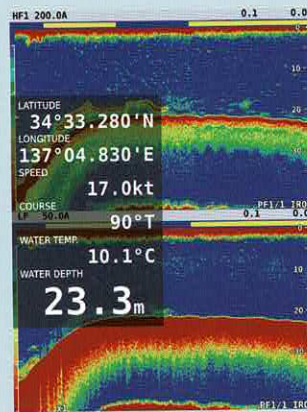
ES-675  
 ES-2035 II  
 ES-1080  
 ES-7200  
 ES-8600



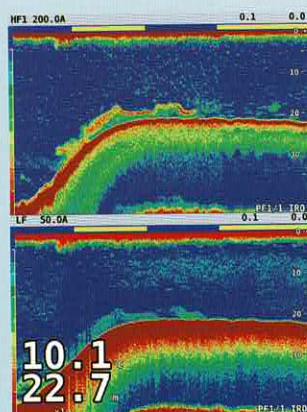
A Scope image



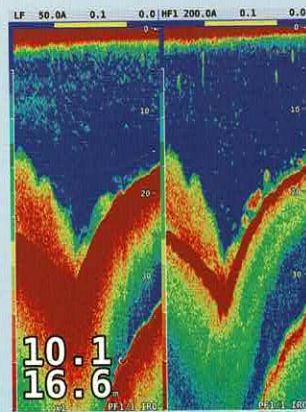
Zoom image



Nav image



Horizontal split image



Split image

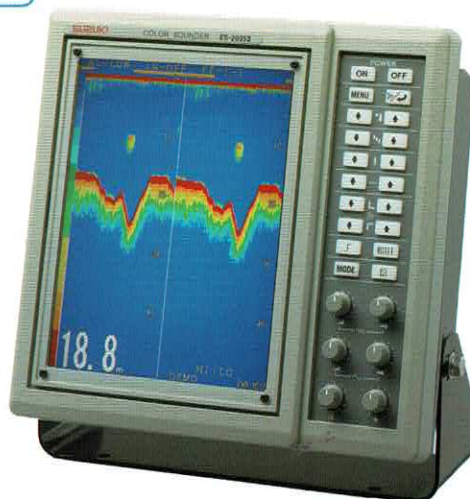


# Echo Sounder

- ▶ Enlarged sea floor display.
- ▶ Dynamic range (7 steps) switching according to the purpose of fishing
- ▶ A scope display



**ES-675**  
6.5 inch



**ES-2035 II**  
10.4 inch

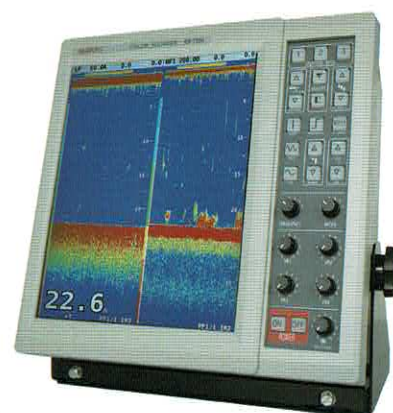
- ▶ Enlarged sea floor display.
- ▶ Dynamic range (7 steps) switching according to the purpose of fishing.
- ▶ A scope display.
- ▶ Up to 12 images of screen Capture. (ES-7200, ES-8600 only)
- ▶ Selectable from 20, 24, 28, 40, 45, 50, 60, 68, 70, 80, 150, 200 kHz.



**ES-1080**  
10.4 inch



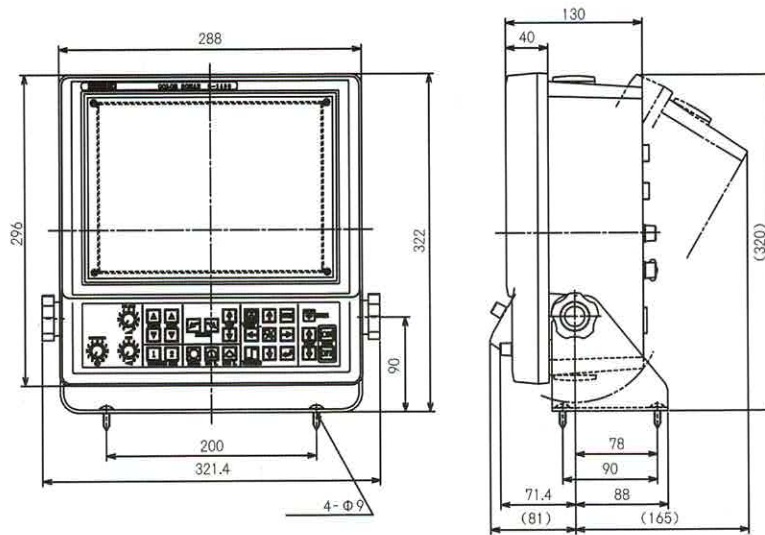
**ES-8600**  
15 inch



**ES-7200**  
12.1 inch

# Dimensions and Weight

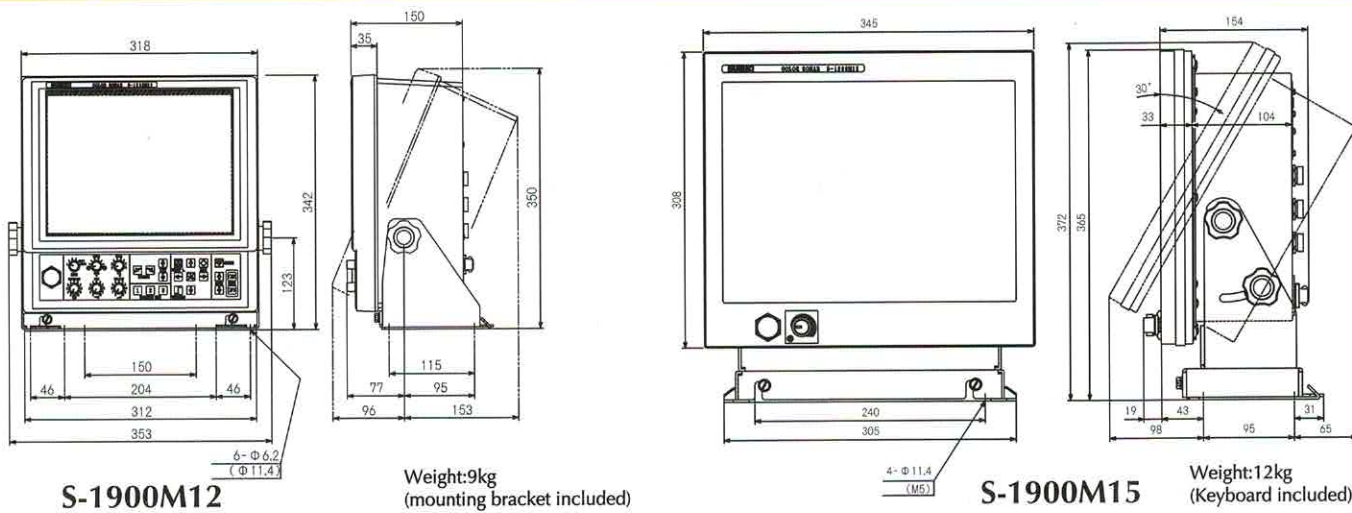
## Serchlight Sonar S-1400



**S-1400**

Weight:6kg  
(mounting bracket included)

## Serchlight Sonar S-1900M12, S-1900M15, S-1900MBB

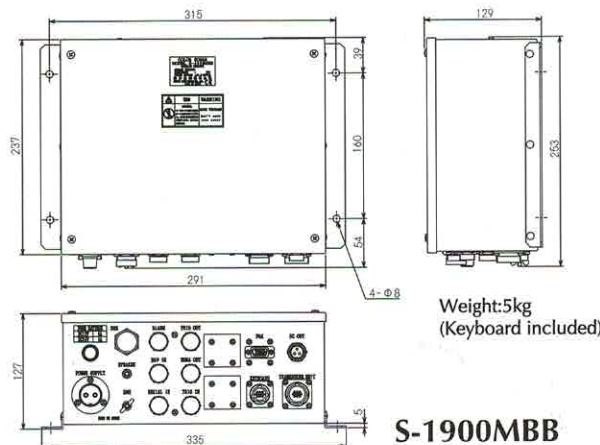


**S-1900M12**

Weight:9kg  
(mounting bracket included)

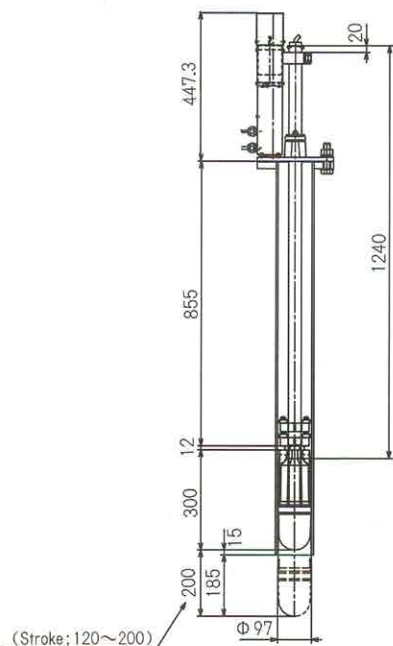
**S-1900M15**

Weight:12kg  
(Keyboard included)



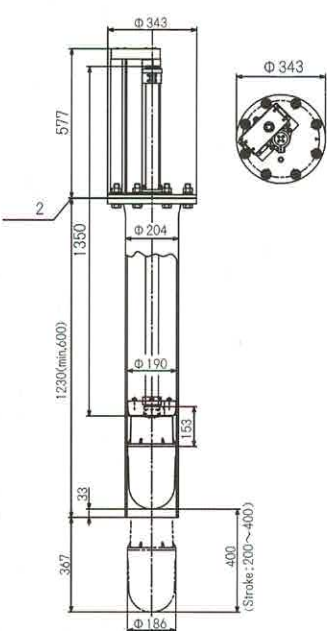
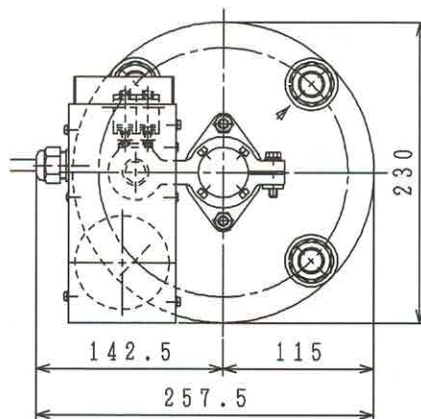
Weight:5kg  
(Keyboard included)

**S-1900MBB**



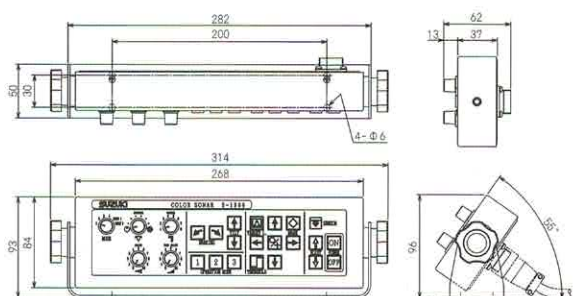
**S-1400H20**

Weight:17kg  
(Without trunk pipe)



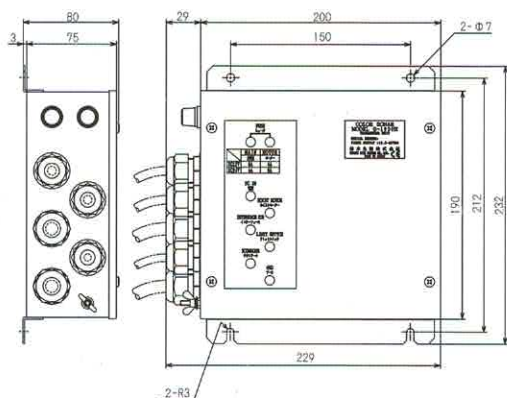
**S-1900H80**

Weight:41kg  
(Without trunk pipe)



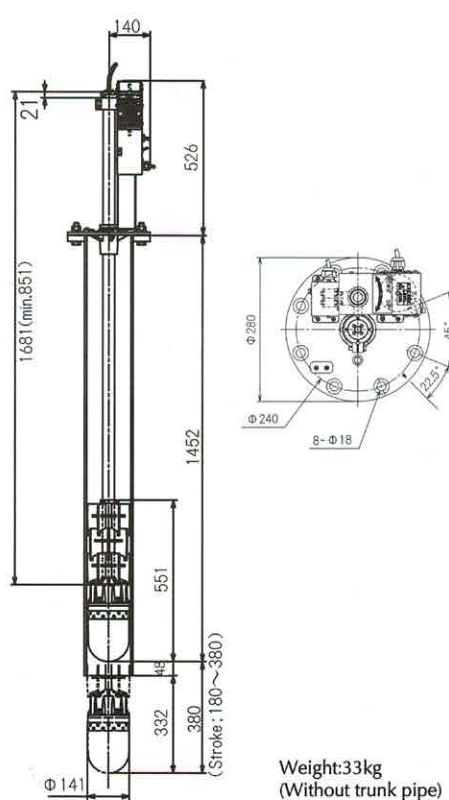
**Key board unit  
(S-1900M15 / S-1900MBB)**

Weight:1.1kg  
(Without base)



**JUNCTION BOX S-1900H**

Weight:2kg  
(Without cable)

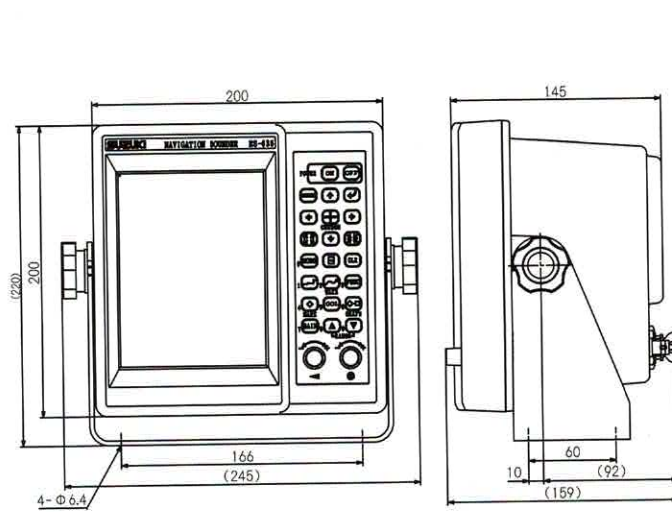


**S-1900H80  
S-1900H140  
S-1900H180**

Weight:33kg  
(Without trunk pipe)

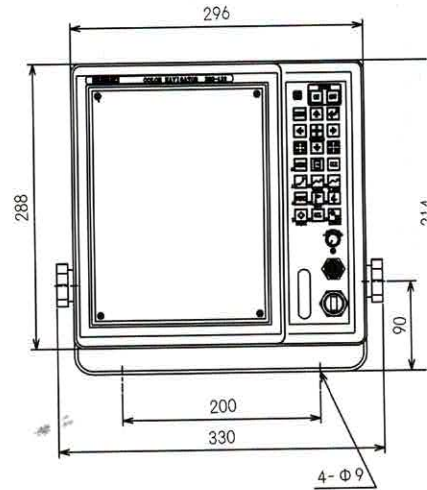
# Dimensions and Weight

## Plotter, Protter Sounder



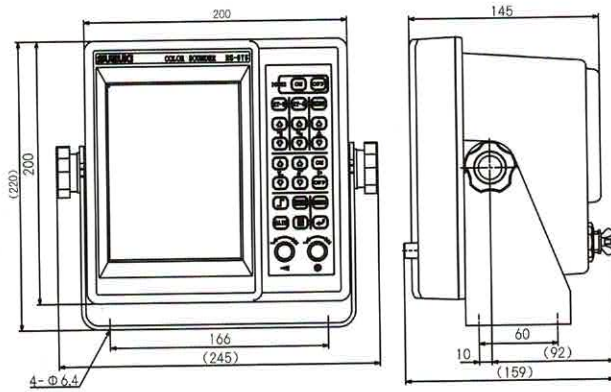
**ESG-625, ES-635**

Weight: 3.5kg  
(mounting bracket included)



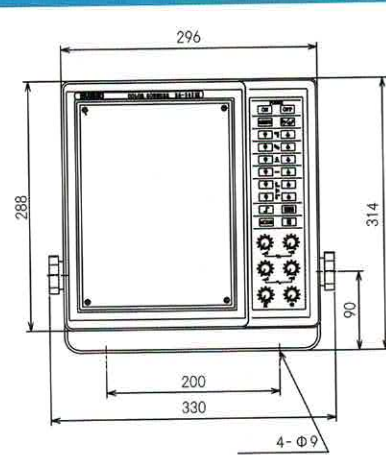
**ESG-12**

## Echo Sounder



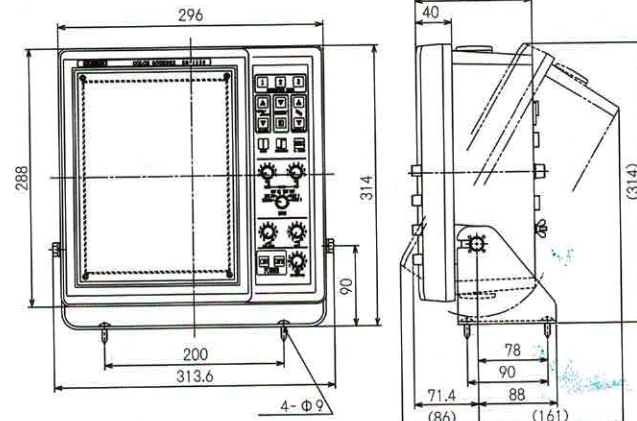
**ES-675**

Weight: 3.4kg  
(mounting bracket included)



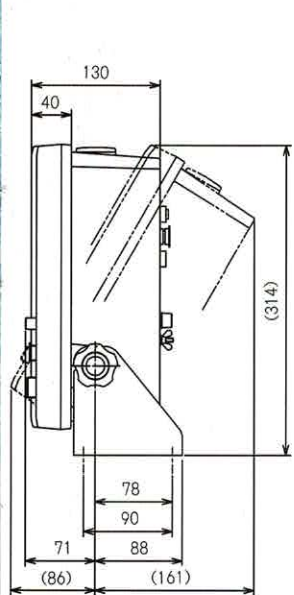
**ES-2035 II**

Weight: 5kg  
(mounting bracket included)

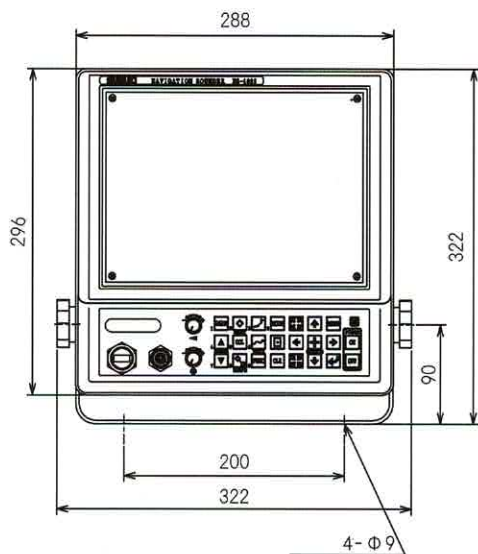


**ES-1080**

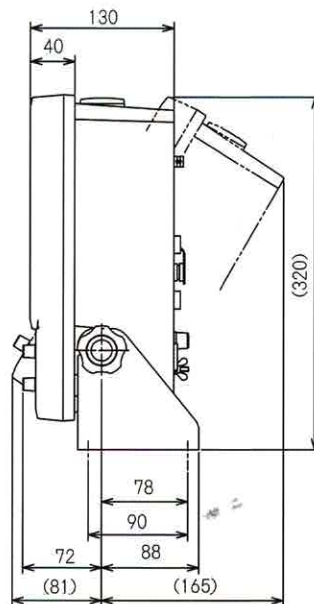
Weight: 6kg  
(mounting bracket included)



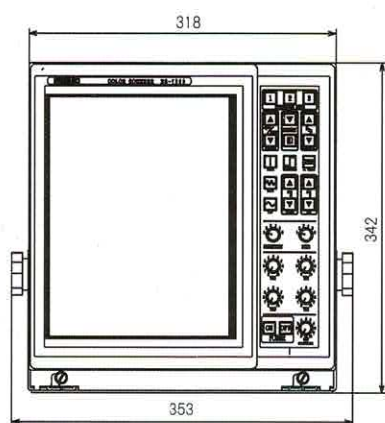
Weight:5kg  
(mounting bracket included)



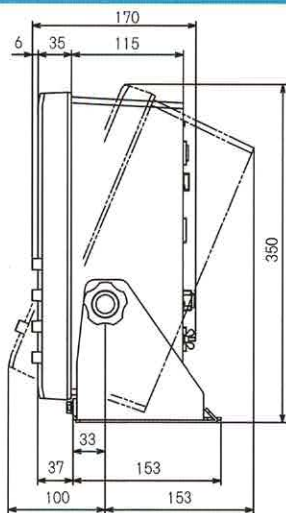
ES-1029



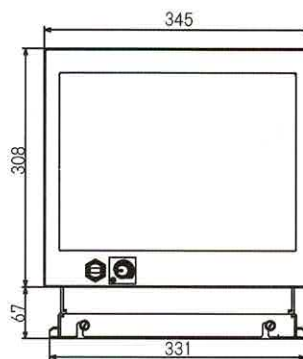
Weight:5.5kg  
(mounting bracket included)



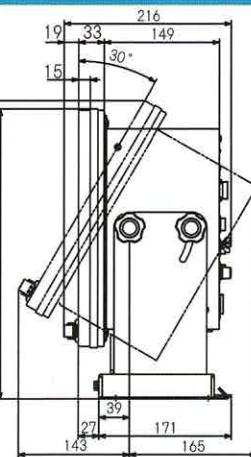
ES-7200



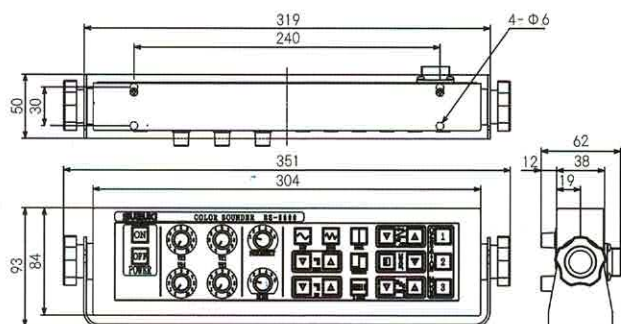
Weight:9kg  
(mounting bracket included)



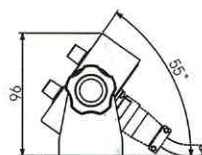
ES-8600



Weight:12.7kg  
(mounting bracket included)



ES-8600 Operation unit



Weight:1.7kg  
(mounting bracket included)

# Specifications Sonar / Plotter

## Sonar

Model		S-1400						
<b>Specifications &amp; Functions:</b>								
Display size / type		10.4-inch color LCD						
Display resolution		640 x 480 pixels						
Output Frequency		220 kHz						
Output power		800 W						
Tilt angle		+5 to -90° (variable with 1° step)						
Range		10 to 300 meter, 10 to 200 fathom / Braccia, 50 to 1000 feet						
Scanning sector angle	Sonar mode	5°step: 5° 25° 45° 85° 125° 165° 205° 360° 10°step: 10° 30° 50° 90° 130° 170° 210° 360°						
	Bottom scan mode	3°step: 3° 27° 45° 63° 93° 117° 147° 177° 5°step: 5° 25° 45° 65° 95° 115° 145° 175°						
	360° scanning time (extracts)	Scanning range (m)	10	40	80	100	160	200
	Scanning time (sec.) 5°step	4.2	7.1	10.9	12.8	18.6	22.4	32.0
	Scanning time (sec.) 10°step	3.7	5.1	7.0	8.0	10.9	12.8	17.6
Display mode		Sonar mode + Data display, Off center mode + Data display, Bottom scan mode + Data display						
Sub-Display		-						
Presentation colors		8 colors & color palette						
Off-centering		Fore, Back, Left, Right (Movable 50% of radius from the center of effective screen)						
Target lock		Reverse, Automatic track, Automatic track with tilt control						
Distance unit		Meter, Fathom, Braccia, Feet						
Data Display		Range, Sector angle, Range scale, Color scale, Interference reduction, VRM, Depth, Tilt angle, Tilt angle diagram, Ring marker, Cross cursor, Latitude /Longitude (option), Own ship's speed (option), Compass display (option), Temp. display (option)						
functions		TVG (4 types), Pulse selection (3 types), Color rejection, Power reduction (2 levels), Compass display, interference rejection, Train correct, Trigger output, VGA output(option), Audio output(option), Remote controller(option)						
External Input		NMEA-0183 (GGA, GLL, VTG, MTW)						
External Output		NMEA-0183 (GGA, GLL, VTG, MTW)						
Power supply		20 to 30 VDC						
Power consumption		70 W (24 VDC)						

## Plotter

Model		ESG-625	ESG-129
<b>Specifications &amp; Functions:</b>			
Display size / type		6.5-inch color LCD	10.4-inch color LCD
Display resolution		480 x 640 pixels	480 x 640 pixels
Frequency		1575.42MHz (C/A code)	1575.42MHz (C/A code)
Receiver type		18 Channels Parallel	18 Channels Parallel
Sensitivity		Below -130dBm	Below -130dBm
Accuracy		Approx. 10m (GPS : 2drms ), Approx. 8m ( DGPS : 2drms)	Approx. 10m (GPS : 2drms ), Approx. 8m ( DGPS : 2drms)
Projection		Mercator projection	Mercator projection
Latitude limits		Between 85°N and 85°S	Between 85°N and 85°S
Map scale		Scale : 1/1,000 to 1/13,000,000 Display width : 0.06 to 737nm	Scale : 1/700 to 1/8,600,000 Display width : 0.06 to 737nm
Wake Display		Memory capacity (Total point) : 16,000 point	Memory capacity (Total point) : 16,000 point
Mark Display		Type: Waypoint, Mark and Chart (3 types) Shape : 8 shapes in 3 sizes each Routes : 50 routes (20 waypoints per route) Memory Capacity (Max.) : 30,000 points	Type: Waypoint, Mark and Chart (3 types) Shape : 8 shapes in 3 sizes each Routes : 50 routes (20 waypoints per route) Memory Capacity (Max.) : 30,000 points
Alarm		① Arrival② Anchor Watch ③ Track Error ④ Border	① Arrival② Anchor Watch ③ Track Error ④ Border
Others		Course Up, Wake Memory, Wake Display, Display Bearing, Zoom In/Out, Cursor Change, Data correction, USB memory*	Course Up, Wake Memory, Wake Display, Display Bearing, Zoom In/Out, Cursor Change, Data correction, Remote controller*, USB memory* SD card*, Outer Buzzer*, Track Ball*
Input data		NMEA-0183: Navigation data*, Water temperature data*, Water depth data*, Buoy*, ARPA radar*, AIS*,GPS compass* Water temperature sensor: OP-102* or OP-41-1*	NMEA-0183: Navigation data*, Water temperature data*, Water depth data*, Buoy*, ARPA radar*, AIS*, GPS compass* Water temperature sensor: OP-102* or OP-41-1*
Outputs data		NMEA-0183: Navigation data, Water temperature data, Depth data	NMEA-0183: Navigation data, Water temperature data, Depth data OTHERS : VGA output*
Power supply		10.5 to 30 VDC	10.5 to 30 VDC
Power consumption		20 W(24 VDC)	25 W (24 VDC)

\* optional equipment is required.

## Sonar

Model	S-1900M12				S-1900M15				S-1900MBB			
<b>Specifications &amp; Functions:</b>												
Display size/type	12.1-inch color LCD				15-inch color LCD				-			
Display resolution	1024 x 768 pixels								-			
Output Frequency	80 kHz, 140kHz, 180kHz											
Output power	80kHz:1.5kW / 2.2kW 140kHz:800W 180kHz:1.5kW											
Tilt angle	+5 to -90° (variable with 1° step)											
Range	8 ranges freely set (Meters, Feet, Fathoms, Braccia can be selected)											
Sector angle	Sonar mode	5°step: 5° 25° 45° 85° 125° 165° 205° 360° 10°step: 10° 30° 50° 90° 130° 170° 210° 360°										
		Bottom scan mode	3°step: 3° 27° 45° 63° 93° 117° 147° 177° 5°step: 5° 25° 45° 65° 95° 115° 145° 175°									
360° scanning time (extracts)	Scanning range (m)		20	40	60	80	100	120	160	180	200	240
	Scanning time (sec.) 5°step	5.7	7.6	9.5	11.4	13.3	15.3	19.1	21.0	23.0	26.8	42.2
	Scanning time (sec.) 10°step	4.1	5.0	6.0	7.0	8.0	8.9	10.8	11.8	12.7	14.7	22.3
	Scanning time (sec.) 15°step	3.5	4.1	4.8	5.4	6.1	6.7	8.0	8.6	9.3	10.6	15.7
	Scanning time (sec.) 20°step	3.2	3.7	4.2	4.6	5.1	5.6	6.6	7.1	7.5	8.5	12.3
Display Mode	Sonar mode + Data display, Off-center mode + Data display, Off-center on the whole screen, Bottom scan mode + Data display, Sounder Mode + Data display											
Sub-Display	Historical display, +Press display, + A-scope display, Track, EXT, Sounder display											
Presentation colors	8 / 16 colors											
Off-centering	Fore, Back, Left, Right											
Target lock	Reverse, Horizontal, Horizontal + Vertical, Marker + Horizontal											
Distance unit	Meter, Fathom, Braccia, Feet											
Data Display	Range, Sector angle, Range scale, Power supply voltage, Water temperature, Color scale, Interference rejection, Gain, Far Gain, TVG graph, Latitude/Longitude and speed (option)											
functions	Operation mode (3 modes), Off-center (4 changes), Train correct, Power rejection, Gain adjust, Temperature adjust, Pulse width control, TVG change, Target lock, Color change (4 types + 2 types of color palette settings), Dynamic range, Interference rejection, Color rejection, Filter (OFF/1/2), Gain control, Far gain control, External trigger synchronization, Trigger signal output, Hoist sensor lamp, Audio (optional speaker required), Stabilizer (up to 25°controllable), Transducer unit automatic retract (Navigator connect required), Full-screen gain control											
External Input	Trigger input, Navigator input, External sounder input, Remote controller input											
External Output	External buzzer, Trigger output, NMEA output, XGA output, Audio output, USB terminal (memory for setting values)											
Power supply	10.5 to 30 VDC				20 to 30 VDC				10.5 to 30 VDC			
Power consumption	24 W (24 VDC)				38 W (24 VDC)				24 W (24 VDC)			

# Specifications Plotter sounder / Sounder

## Plotter sounder

### Plotter section

Model	ES-635	ES-1029
<b>Specifications &amp; Functions:</b>		
Display size / type	6.5-inch color LCD	10.4-inch color LCD
Display resolution	480 x 640 pixels	480 x 640 pixels
Frequency	1575.42MHz (C/A code)	1575.42MHz (C/A code)
Receiver type	18 Channels Parallel	18 Channels Parallel
Sensitivity	Below -130dBm	Below -130dBm
Accuracy	Approx. 10m (GPS : 2drms), Approx. 8m ( DGPS : 2drms)	Approx. 10m (GPS : 2drms), Approx. 8m ( DGPS : 2drms)
Projection	Mercator projection	Mercator projection
Latitude limits	Between 85°N and 85°S	Between 85°N and 85°S
Map scale	Scale : 1/1,000 to 1/13,000,000 Display width : 0.06 to 737nm	Scale : 1/700 to 1/8,600,000 Display width : 0.06 to 737nm
Wake Display	Memory capacity (Total point) : 16,000 point	Memory capacity (Total point) : 16,000 point
Mark Display	Type: Waypoint, Mark and Chart (3 types) Shape : 8 shapes in 3 sizes each Routes : 50 routes (20 waypoints per route) Memory Capacity (Max.) : 30,000 points	Type: Waypoint, Mark and Chart (3 types) Shape : 8 shapes in 3 sizes each Routes : 50 routes (20 waypoints per route) Memory Capacity (Max.) : 30,000 points
Alarm	① Arrival② Anchor Watch ③ Track Error ④ Border	① Arrival② Anchor Watch ③ Track Error ④ Border
Others	Course Up, Wake Memory, Wake Display, Display Bearing, Zoom In/Out, Cursor Change, Data correction, USB memory*	Course Up, Wake Memory, Wake Display, Display Bearing, Zoom In/Out, Cursor Change, Data correction, Remote controller*, USB memory* SD card*, Outer Buzzer*, Track Ball*
Input data	NMEA-0183: Navigation data*, Water temperature data*, Water depth data*, Buoy*, ARPA radar*, AIS*,GPS compass* Water temperature sensor: OP-102* or OP-41-1*	NMEA-0183: Navigation data*, Water temperature data*, Water depth data*, Buoy*, ARPA radar*, AIS*, GPS compass* Water temperature sensor: OP-102* or OP-41-1*
Outputs data	NMEA-0183: Navigation data, Water temperature data, Depth data	NMEA-0183: Navigation data, Water temperature data, Depth data OTHERS : VGA output*
Power supply	10.5 to 30 VDC	10.5 to 30 VDC
Power consumption	20 W (24 VDC)	25 W (24 VDC)

### Sounder section

Basic ranges	0~5, 10 to 2000 (meter, fathom, and braccia) 0~15, 20 to 5000 (feet)	0~5, 10 to 2000 (meter, fathom, and braccia) 0~15, 20 to 5000 (feet)
Phased range	Up to 999 meter, fathom and braccia Up to 2999 feet	Up to 999 meter, fathom and braccia Up to 2999 feet
Partial Expansion	Combination of Basic Range and Phased Range	Combination of Basic Range and Phased Range
Expansion Range	0~1. 2.5 to 250 [meters, fathoms and braccia] 0~10, 20 to 500 [feet]	0~1. 2.5 to 250 [meters, fathoms and braccia] 0~10, 20 to 500 [feet]
Frequency	Dual frequency 50 and 200kHz transmitted alternately	50kHz / 200kHz
Presentation Modes	Low Frequency Display, High Frequency Display, Dual-Frequency Display, Bottom Expansion Display	Low Frequency Display, High Frequency Display, Dual-Frequency Display, Bottom Expansion Display

\* optional equipment is required.

## Sounder

Model	ES-1080	ES-7200
<b>Specifications &amp; Functions:</b>		
Output power	5kW	5kW
Frequency	Single frequency 20, 24, 28, 40, 45, 50, 60, 68, 70, 80, 150, 200kHz	Dual frequency 20, 24, 28, 40, 45, 50, 60, 68, 70, 80, 150, 200kHz
Display size/type	10.4-inch color LCD	12.1-inch color LCD
Display resolution	640 x 480 pixels	1024 x 768 pixels
Presentation colors	8 or 16 colors	8 or 16 colors
Basic ranges	Customized 7 ranges	Free Range (10 kinds of range settings up to 3000m, br, fm or 6000ft)
Range phasing	Up to 999m, br, fm or 2999ft	Up to 1999m, br, fm or 2999ft
Partial expansion ranges	Customized 8 ranges presentable (MAX 200m)	Free Range (8 kinds of range settings up to 1000m, br, fm or 3000ft)
Bottom expansion ranges	Customized 8 ranges presentable (MAX 200m)	Free Range (8 kinds of range settings up to 1000m, br, fm or 3000ft)
Display modes	Normal display, Bottom expansion Display (3 Types) + Auto range (Split screen display), Partial expansion display (Split screen display), Navigation data display, Range setting / Sounder display, Function settings / Sounder display, Color palette set Menu (Color scale + sounder)	Single Low Frequency, Single High Frequency, Dual Frequency (Vertical or Horizontal), Bottom Expansion/Sounder, Partial Expansion/Sounder, Navigation Mode/Sounder, Range set Menu, Functions set Menu, Color Palette Set Menu, A-Scope/Sounder
Display data	Depth, Depth scale, Range phasing, Expansion start / VRM, Timer, Temp & Temp graph*, LAT / LON*, Speed*, Course*	Depth, Depth Scale, Shift, Expansion Start/VRM, Timer, Water Temperature Graph*, Lat/ Lon*, Speed*, Course*, Voltage
Function Display	Auto range, Auto shift, Picture speed, Interference reduction, Operation mode	Auto range, Auto shift, Picture speed, Interference reduction, Operation mode
Other display data	30 Second Interval Mark, Color scale, Expansion mark, Marker line, TX power	30 Second Interval Mark, Color scale, Expansion mark, Marker line, TX power
Other functions	Operation mode, A-scope, Far Gain control, Gain control, TVG curve, STC, D-range, Transmit interval change, Pulse width change (Auto, Manual), Color selection, Interference reduction, Noise reduction, Jamming reduction, Clutter control, Threshold adjustment, Temp adjustment, White line, Data memory, Outer range display, Draft adjustment, Alarms (Temp, Depth, Fish), Scale change, Picture speed	Operation Mode, Frequency Selection, Far Gain Control, Gain Control, TVG Curve, D-Range, Transmit Interval Change, Pulse Width Change (Auto/Manual), Color Selection, Interference Reduction, Jamming Reduction, Noise Reduction, Clutter Control, Water Temp. Adjustment, White Line, Picture Filter, Screenshot, Outer Range Display, Draft Adjustment, Output Power Reduction, Stopwatch, Various Alarms, Scale Change, Brightness Control, Picture Speed (Auto/Fix), Sonic control, Full-screen Gain Control
External input	Water temperature Sensor (OP-102 or OP-41-1)*, Water temperature Data (NMEA-0183 [MTW])* , Navigational data (NMEA-0183)*, External sounder*	Water temperature Sensor (OP-102 or OP-41-1)*, Water temperature Data (NMEA-0183 [MTW])* , Navigational Data (NMEA-0183), External Sounder*, Compass (NMEA-0183)
External Output	Depth data (NMEA-0183)*, Water Temperature data (NMEA-0183)*, Marker (TLL)*, External sounder*	Depth Data (NMEA-0183), Water Temperature Data (NMEA-0183), Marker (TLL), External Sounder, Analog RGB Output*, External Buzzer, USB Memory
Power supply	10.5 to 40 VDC	10.5 to 30 VDC
Power consumption	45 W (24 VDC)	60 W (24 VDC)

\* optional equipment is required.



## Sounder

Model	ES-675	ES-2035 II
<b>Specifications &amp; Functions:</b>		
Output power	300W	600W / 1kW
Frequency	Dual frequency 50 and 200kHz transmitted alternately	Single frequency: either 50kHz (600W or 1kW) or 200kHz (600W) Dual frequency: 50kHz (600W or 1kW) & 200kHz (600W)
Display size/type	6.5-inch color LCD	10.4-inch color LCD
Display resolution	640 x 480 pixels	640 x 480 pixels
Presentation colors	8 or 16 colors	8 or 16 colors
Basic ranges	0 - 5, 10, 15, 20, 30, 40, 50, 60, 70, 80, 90, 100, 150, 200, 300, 400, 500, 600, 700, 800, 900, 1000 m. fm. or br. 0 - 20, 30, 40, 50, 60, 70, 80, 90, 100, 200, 300, 400, 500, 600, 700, 800, 900, 1000, 1500, 2000, 2500, 3000 ft	0 - 5, 10, 15, 20, 30, 40, 50, 60, 80, 100, 150, 200, 300, 500, 1000, 1500, 2000 m. fm. or br. 0 - 15, 20, 30, 40, 50, 60, 80, 100, 150, 200, 300, 500, 1000, 1500, 2000, 3000, 5000 ft
Range phasing	The upper range limit may be set per 2/5 of the basic range up to 999m, br. fm. or 2999 ft	The upper range limit may be set per 2/5 of the range between 0 to 999
Partial expansion ranges	-	Available as a combination of the range and the phased range
Bottom expansion ranges	0 - 1, 2.5, 5, 10, 20, 50, 100, 250 m. fm. or br. 0 - 5, 10, 20, 50, 100, 250, 500, 1000 ft	0 - 1, 2.5, 5, 10, 20, 50, 100, 250 m fm or br 0 - 5, 10, 20, 50, 100, 250, 500, 1000 ft
Display modes	Single low frequency, Single high frequency, Single frequency + Bottom expansion, Dual frequency, Dual frequency + bottom expansion, Function set menu, Color Palette Set Menu	Single frequency: Normal, Bottom expansion, A-Scope, Navigation Dual frequency: 50kHz Normal, 200kHz Normal, 50 / 200kHz Dual frequency, Small Target normal, Bottom expansion, A-Scope, Navigation
Display data	Depth, Depth Scale, Temperature*, Temperature scale*, Temperature Graph*, Lat / Lon*, Speed*, Course*	Depth scale, Depth(3 steps), Water temp.(3 steps)*, Temp scale*, VRMs, Lat / Lon* Speed*, Course*
Function Display	Auto range, Auto shift, Alarm, Picture speed, Noise reduction	Alarm, Interference reduction, Picture speed, Auto range, Auto shift, Frequency(Dual frequency unit)
Other display data	Time marker, Color scale, Alarm marker	Time marker(30 seconds elapsed time), Color scale, Temp. graph*, Alarm set maker Expansion range line, TX power
Other functions	Prior frequency, STC, Gain control, TVG, D-Range, Color selection, Interference reduction, Clutter, Temperature adjustment, White line, Alarms(Shallow, Deep, Fish), Brightness control	STC, Threshold, White line, Interference reduction, Noise reduction, Auto range, Auto shift, Scale position change (2 positions), Depth display position (2 positions), Alarms(shallow, deep, fish), Temp. display position change (2 positions), Color tone selection (6 selections), Output power reduction, Expansion mode change(4 types), Picture speed (stop & 4 changes), User settings, Key function Backup
External input	Water temperature Sensor* (OP-102 or OP-41-1), Water temperature Data* (NMEA-0183 [MTW]), Navigational Data* (NMEA-0183 [VTG, GGA, GLL, RMC])	Water temperature Sensor* (OP-102 or OP-41-1), Water Temperature Data* (NMEA-0183 [MTW]), Navigational Data* (NMEA-0183 [VTG, GGA, GLL, RMC])
External Output	NMEA-0183 (MTW, DBT)*	NMEA-0183 (MTW, DBT)
Power supply	10.5 to 30 VDC	10.5 to 30 VDC
Power consumption	16 W (24 VDC)	25 W (24 VDC)

\* optional equipment is required.

## Sounder

Model	ES-8600
<b>Specifications &amp; Functions:</b>	
Output power	5kW
Frequency	Dual-frequency (20, 24, 28, 40, 45, 50, 60, 68, 70, 80, 150, 200kHz)
Display size/type	15-inch color LCD
Display resolution	1024 x 768 pixels
Presentation colors	8 or 16 colors
Basic ranges	Free Range (10 kinds of range settings up to 3000m, br, fm or 6000ft)
Range phasing	Up to 1999m, br, fm or 2999ft
Partial expansion ranges	Free Range (8 kinds of range settings up to 1000m, br, fm or 3000ft)
Bottom expansion ranges	Free Range (8 kinds of range settings up to 1000m, br, fm or 3000ft)
Display modes	Single Low Frequency, Single High Frequency, Dual Frequency (Vertical or Horizontal), Bottom Expansion/Sounder, Partial Expansion/Sounder, Navigation Mode/Sounder, Range set Menu, Functions set Menu, Color Palette Set Menu, A-Scope/Sounder
Display data	Depth, Depth Scale, Shift, Expansion Start/VRM, Timer, Water Temperature Graph*, Lat/ Lon*, Speed*, Course*, Voltage
Function Display	Auto range, Auto shift, Picture speed, Interference reduction, Operation mode
Other display data	30 Second Interval Mark, Color scale, Expansion mark, Marker line, TX power
Other functions	Operation Mode, Frequency Selection, Far Gain Control, Gain Control, TVG Curve, D-Range, Transmit. Interval Change, Pulse Width Change(Auto/Manual), Color Selection, Interference Reduction, Jamming Reduction, Noise Reduction, Clutter Control, Water Temp. Adjustment, White Line, Picture Filter, Screenshot, Outer Range Display, Draft Adjustment, Output Power Reduction, Stopwatch, Various Alarms, Scale Change, Brightness Control, Picture Speed (Auto/Fix), Sonic control, Full-screen Gain Control
External input	Water temperature Sensor (OP-102 or OP-41-1)*, Water temperature Data (NMEA-0183 [MTW])* , Navigational Data (NMEA-0183), External Sounder*, Compass (NMEA-0183)
External Output	Depth Data(NMEA-0183), Water Temperature Data(NMEA-0183), Marker(TLL), External Sounder, Analog RGB Output*, External Buzzer, USB Memory
Power supply	20 to 30 VDC
Power consumption	60 W (24 VDC)

\* optional equipment is required.

## Sounder

Model	ES-675	ES-2035 II
<b>Specifications &amp; Functions:</b>		
Output power	300W	600W / 1kW
Frequency	Dual frequency 50 and 200kHz transmitted alternately	Single frequency: either 50kHz (600W or 1kW) or 200kHz (600W) Dual frequency: 50kHz (600W or 1kW) & 200kHz (600W)
Display size/type	6.5-inch color LCD	10.4-inch color LCD
Display resolution	640 x 480 pixels	640 x 480 pixels
Presentation colors	8 or 16 colors	8 or 16 colors
Basic ranges	0 - 5, 10, 15, 20, 30, 40, 50, 60, 70, 80, 90, 100, 150, 200, 300, 400, 500, 600, 700, 800, 900, 1000 m. fm. or br. 0 - 20, 30, 40, 50, 60, 70, 80, 90, 100, 200, 300, 400, 500, 600, 700, 800, 900, 1000, 1500, 2000, 2500, 3000 ft	0 - 5, 10, 15, 20, 30, 40, 50, 60, 80, 100, 150, 200, 300, 500, 1000, 1500, 2000 m. fm. or br. 0 - 15, 20, 30, 40, 50, 60, 80, 100, 150, 200, 300, 500, 1000, 1500, 2000, 3000, 5000 ft
Range phasing	The upper range limit may be set per 2/5 of the basic range up to 999m, br. fm. or 2999 ft	The upper range limit may be set per 2/5 of the range between 0 to 999
Partial expansion ranges	-	Available as a combination of the range and the phased range
Bottom expansion ranges	0 - 1, 2.5, 5, 10, 20, 50, 100, 250 m. fm. or br. 0 - 5, 10, 20, 50, 100, 250, 500, 1000 ft	0 - 1, 2.5, 5, 10, 20, 50, 100, 250 m fm or br 0 - 5, 10, 20, 50, 100, 250, 500, 1000 ft
Display modes	Single low frequency, Single high frequency, Single frequency + Bottom expansion, Dual frequency, Dual frequency + bottom expansion, Function set menu, Color Palette Set Menu	Single frequency: Normal, Bottom expansion, A-Scope, Navigation Dual frequency: 50kHz Normal, 200kHz Normal, 50 / 200kHz Dual frequency, Small Target normal, Bottom expansion, A-Scope, Navigation
Display data	Depth, Depth Scale, Temperature*, Temperature scale*, Temperature Graph*, Lat / Lon*, Speed*, Course*	Depth scale, Depth(3 steps), Water temp.(3 steps)*, Temp scale*, VRMs, Lat / Lon* Speed*, Course*
Function Display	Auto range, Auto shift, Alarm, Picture speed, Noise reduction	Alarm, Interference reduction, Picture speed, Auto range, Auto shift, Frequency(Dual frequency unit)
Other display data	Time marker, Color scale, Alarm marker	Time marker(30 seconds elapsed time), Color scale, Temp. graph*, Alarm set maker Expansion range line, TX power
Other functions	Prior frequency, STC, Gain control, TVG, D-Range, Color selection, Interference reduction, Clutter, Temperature adjustment, White line, Alarms(Shallow, Deep, Fish), Brightness control	STC, Threshold, White line, Interference reduction, Noise reduction, Auto range, Auto shift, Scale position change (2 positions), Depth display position (2 positions), Alarms(shallow, deep, fish), Temp. display position change (2 positions), Color tone selection (6 selections), Output power reduction, Expansion mode change(4 types), Picture speed (stop & 4 changes), User settings, Key function Backup
External input	Water temperature Sensor* (OP-102 or OP-41-1), Water temperature Data* (NMEA-0183 [MTW]), Navigational Data* (NMEA-0183 [VTG, GGA, GLL, RMC])	Water temperature Sensor* (OP-102 or OP-41-1), Water Temperature Data* (NMEA-0183 [MTW]), Navigational Data* (NMEA-0183 [VTG, GGA, GLL, RMC])
External Output	NMEA-0183 (MTW, DBT)*	NMEA-0183 (MTW, DBT)
Power supply	10.5 to 30 VDC	10.5 to 30 VDC
Power consumption	16 W (24 VDC)	25 W (24 VDC)

\* optional equipment is required.

## Sounder

Model	ES-8600
<b>Specifications &amp; Functions:</b>	
Output power	5kW
Frequency	Dual-frequency (20, 24, 28, 40, 45, 50, 60, 68, 70, 80, 150, 200kHz)
Display size/type	15-inch color LCD
Display resolution	1024 x 768 pixels
Presentation colors	8 or 16 colors
Basic ranges	Free Range (10 kinds of range settings up to 3000m, br, fm or 6000ft)
Range phasing	Up to 1999m, br, fm or 2999ft
Partial expansion ranges	Free Range (8 kinds of range settings up to 1000m, br, fm or 3000ft)
Bottom expansion ranges	Free Range (8 kinds of range settings up to 1000m, br, fm or 3000ft)
Display modes	Single Low Frequency, Single High Frequency, Dual Frequency (Vertical or Horizontal), Bottom Expansion/Sounder, Partial Expansion/Sounder, Navigation Mode/Sounder, Range set Menu, Functions set Menu, Color Palette Set Menu, A-Scope/Sounder
Display data	Depth, Depth Scale, Shift, Expansion Start/VRM, Timer, Water Temperature Graph*, Lat/ Lon*, Speed*, Course*, Voltage
Function Display	Auto range, Auto shift, Picture speed, Interference reduction, Operation mode
Other display data	30 Second Interval Mark, Color scale, Expansion mark, Marker line, TX power
Other functions	Operation Mode, Frequency Selection, Far Gain Control, Gain Control, TVG Curve, D-Range, Transmit. Interval Change, Pulse Width Change(Auto/Manual), Color Selection, Interference Reduction, Jamming Reduction, Noise Reduction, Clutter Control, Water Temp. Adjustment, White Line, Picture Filter, Screenshot, Outer Range Display, Draft Adjustment, Output Power Reduction, Stopwatch, Various Alarms, Scale Change, Brightness Control, Picture Speed (Auto/Fix), Sonic control, Full-screen Gain Control
External input	Water temperature Sensor (OP-102 or OP-41-1)*, Water temperature Data (NMEA-0183 [MTW])* , Navigational Data (NMEA-0183), External Sounder*, Compass (NMEA-0183)
External Output	Depth Data(NMEA-0183), Water Temperature Data(NMEA-0183), Marker(TLL), External Sounder, Analog RGB Output*, External Buzzer, USB Memory
Power supply	20 to 30 VDC
Power consumption	60 W (24 VDC)

\* optional equipment is required.



If you would like to know more about our products  
please contact...

## **SUZUKI FISH FINDER CO., LTD.**

Head Office 12-1, Mamizuka-cho, Toyohashi-city, Aichi-pref,  
441-8007 Japan  
Phone (81)532-32-7511 Fax (81)532-32-7500  
e-mail address : sales@suzukiff.co.jp  
URL : <http://www.suzukiff.co.jp/>

©Colors used in this catalogue are subject to differ from actual colors.

**PLEASE CONTACT**

